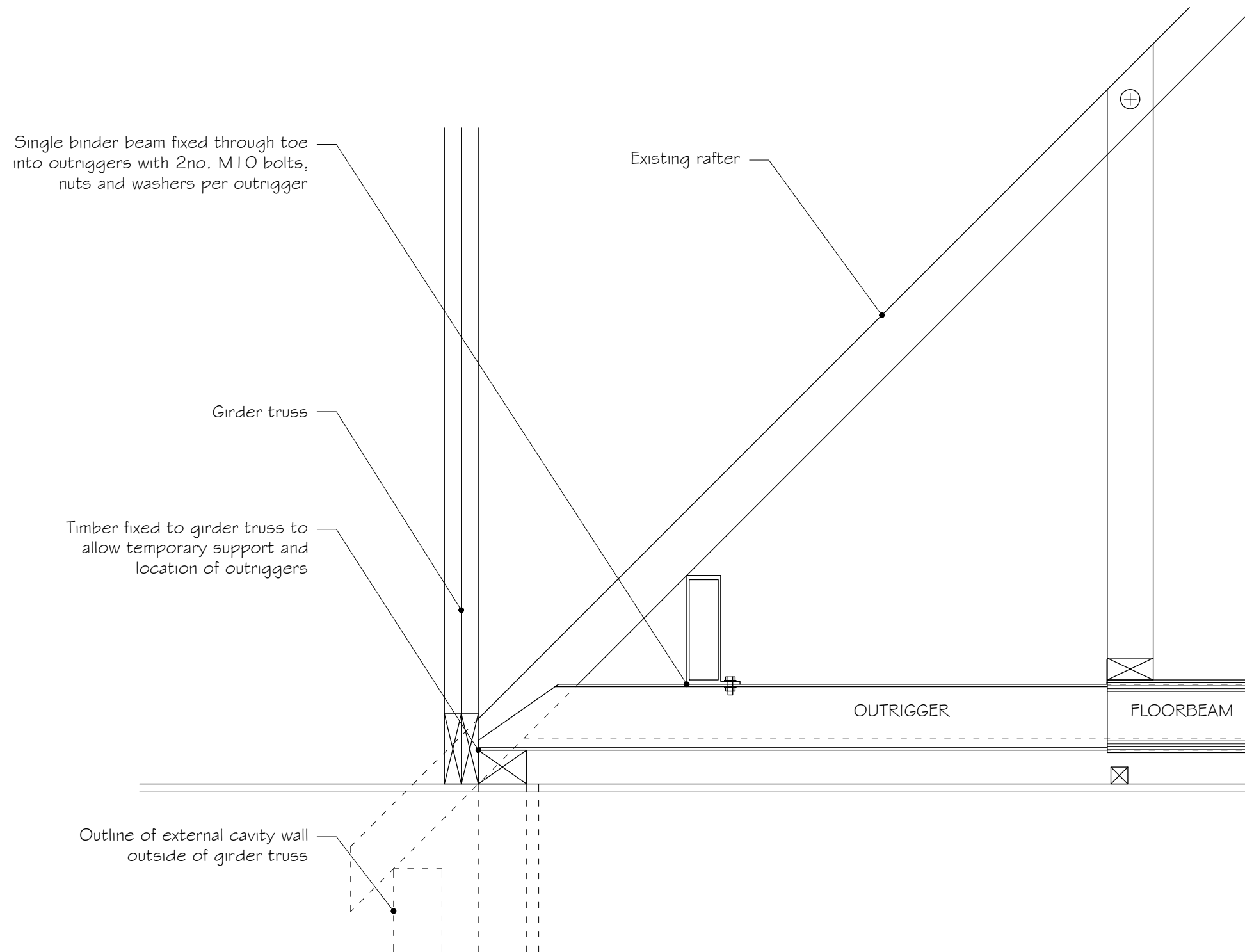


Contractors must check all dimensions on site. Only figured dimensions are to be worked from. Discrepancies must be reported to Telebeam prior to works commencing on site.

The document and data it records are confidential and for the use of authorized persons only exempt with Telebeam prior written consent. THIS DRAWING IS COPYRIGHT ©.

It must not be copied in whole or part in any form, used for any purpose or disclosed to any person and all rights (including Copyright and Design rights) therein belong to Telebeam Ltd ©



Unit 6  
 Devizes Trade Centre  
 Hopton Park  
 Devizes  
 Wiltshire  
 SN10 2EH

Tel: 01380 739000  
 Website: www.telebeam.co.uk  
 Email: info@telebeam.co.uk

Title  
**Binder Beam Detail Over Grider Truss**

Client

Detail  
**Generic Detail**

Drawing no. <b>0#</b>	Revision
--------------------------	----------

Scale  
**1:10@A3**

Date <b>01/12/2020</b>	Drawn by <b>AJL</b>	Checked by <b>DLR</b>
---------------------------	------------------------	--------------------------