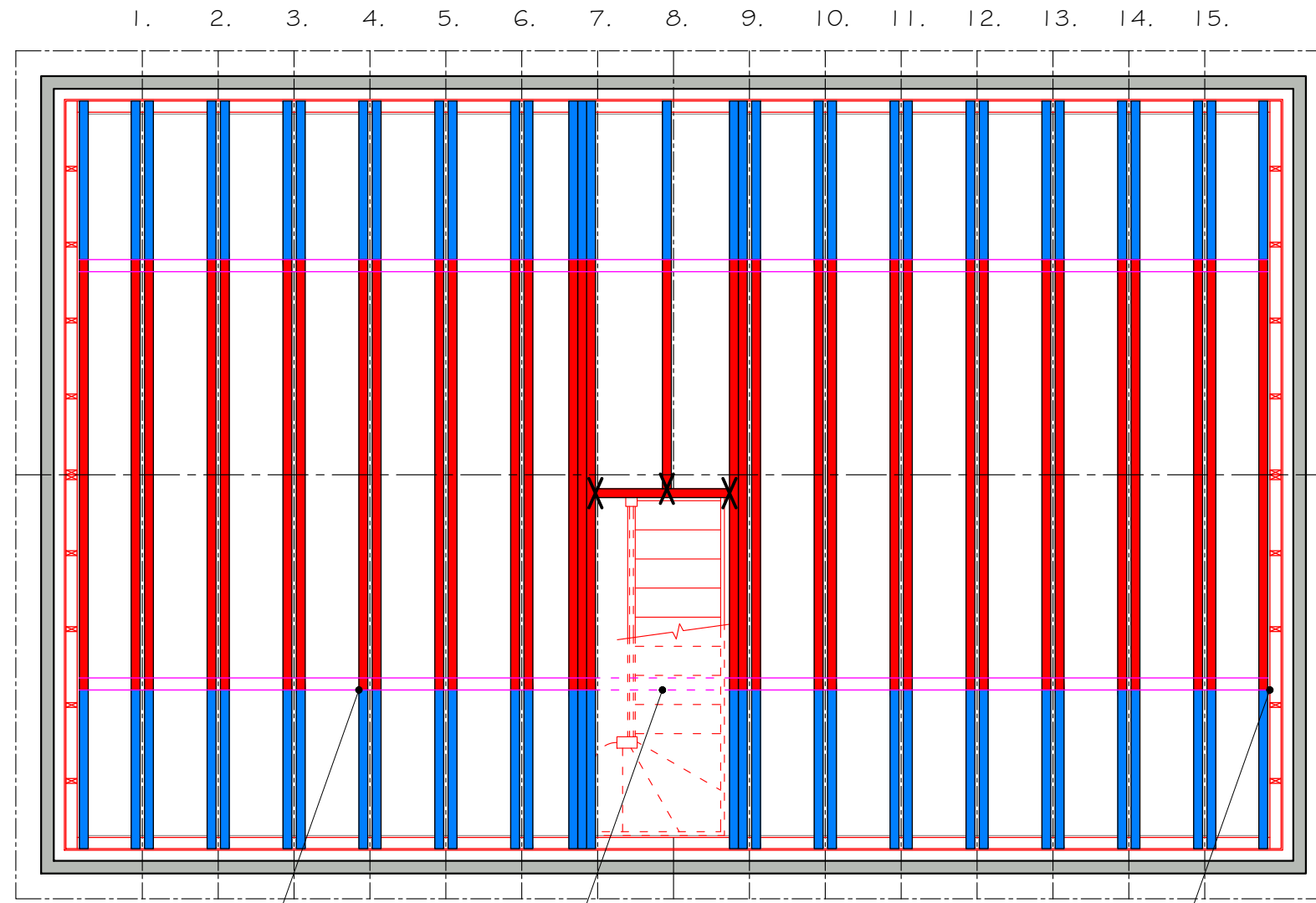


Contractors must check all dimensions on site. Only figured dimensions are to be worked from. Discrepancies must be reported to Telebeam prior to works commencing on site.

The document and data it records are confidential and for the use of authorized persons only exempt with Telebeam prior written consent. THIS DRAWING IS COPYRIGHT ©.

It must not be copied in whole or part in any form, used for any purpose or disclosed to any person and all rights (including Copyright and Design rights) therein belong to Telebeam Ltd ©



**Legend**

- Floor Beam
- Outrigger
- X Hanger
- - - - Trusses (numbered)

Telebeam system alongside trusses at 600mm typical C/C

High level purlin over stairwell spliced into double studs

89 x 38mm timber framing with double head plate and 12mm OSB diaphragm

 <small>the unique loft conversion &amp; flooring system</small>		
<small>Unit 6 Devides Trade Centre Hopton Park Devides Wiltshire SN10 2EH</small>		
<small>Tel: 01380 739000 Website: www.telebeam.co.uk Email: info@telebeam.co.uk</small>		
<small>Title</small> <b>Telebeam Layout</b> <b>Timber Framed Build</b>		
<small>Client</small>		
<small>Detail</small> <b>Generic Detail</b>		
<small>Drawing no.</small> <b>0#</b>	<small>Revision</small>	
<small>Scale</small> <b>1:50@A3</b>		
<small>Date</small> <b>01/12/2020</b>	<small>Drawn by</small> <b>AJL</b>	<small>Checked by</small> <b>DLR</b>